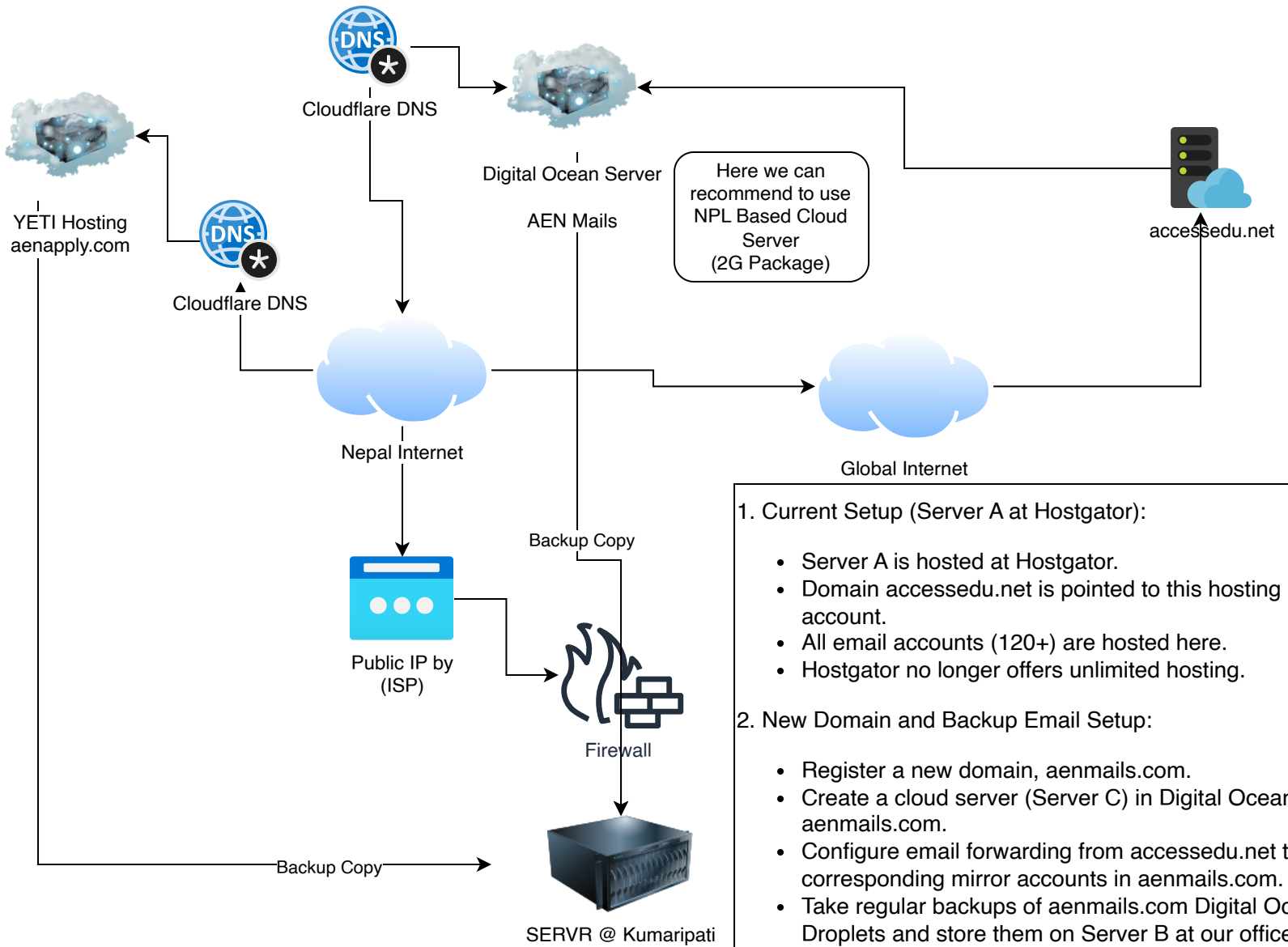


MODEL - A Deployment



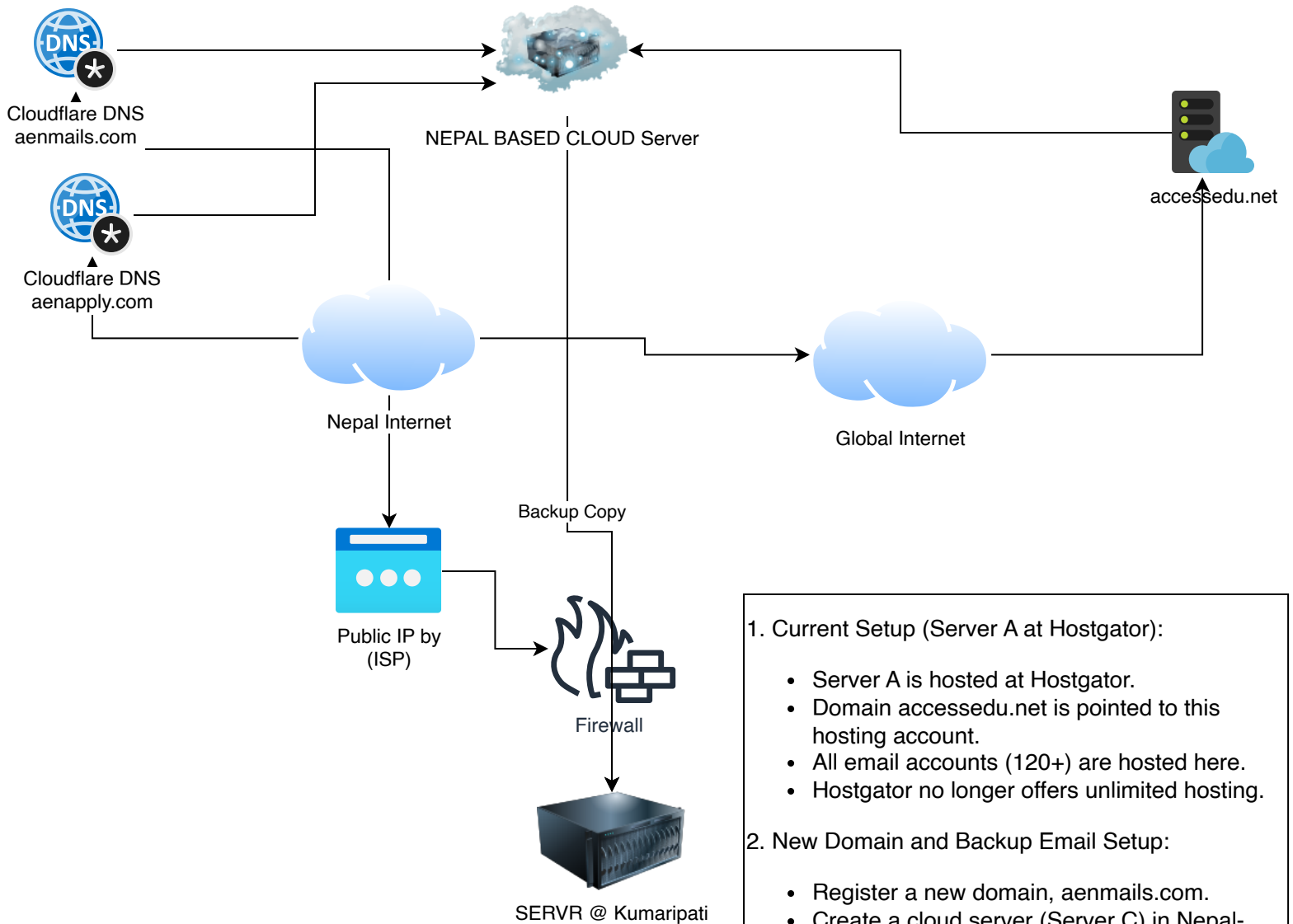
- 1. Current Setup (Server A at Hostgator):**
 - Server A is hosted at Hostgator.
 - Domain *accessedu.net* is pointed to this hosting account.
 - All email accounts (120+) are hosted here.
 - Hostgator no longer offers unlimited hosting.
- 2. New Domain and Backup Email Setup:**
 - Register a new domain, *aenmails.com*.
 - Create a cloud server (Server C) in Digital Ocean for *aenmails.com*.
 - Configure email forwarding from *accessedu.net* to corresponding mirror accounts in *aenmails.com*.
 - Take regular backups of *aenmails.com* Digital Ocean Droplets and store them on Server B at our office premise in Kumarihati Lalitpur.
- 3. New Cloud Server Deployment (Server D):**
 - Deploy a new cloud server (Server D) in a Nepal-based cloud service provider for the new B2B application portal.
 - Ensure the cloud service provider is chosen based on its proximity to Nepal for minimal latency.
 - Set up the new B2B application portal on Server D with necessary configurations and security measures.
- 4. Backup Strategy:**
 - Implement backup procedures for the new B2B application portal on Server D.
 - Regularly back up the application data and configurations.
 - Store backup copies on Server B at your office premise for redundancy and disaster recovery.

Costs of Operations (A)

1. aenapply.com Domain >> 2000	
2. aenmails.com Domain >> 2000	
3. accessedu.net Domain >> 2000	
4. accessnepal.net Domain >> 2000	
5. aenapply.com CS >> 96000	
6. aenmails.com CS >> 36000	
7. accessedu.net HG >> 96000	

Total : 2,36,000	
This is total Annual Cost	

MODEL - B Deployment (LITTLE BIT SLOWER FOR ABROAD BUT FASTER FOR NEPAL)



Costs of Operations (B)

1. aenapply.com Domain >> 2000
2. aenmails.com Domain >> 2000
3. accessedu.net Domain >> 2000
4. accessnepal.net Domain >> 2000
5. aenapply.com CS >> 96000
6. accessedu.net HG >> 96000

=====

Total : 2,00,000/-

This is total Annual Cost

1. Current Setup (Server A at Hostgator):

- Server A is hosted at Hostgator.
- Domain `accessedu.net` is pointed to this hosting account.
- All email accounts (120+) are hosted here.
- Hostgator no longer offers unlimited hosting.

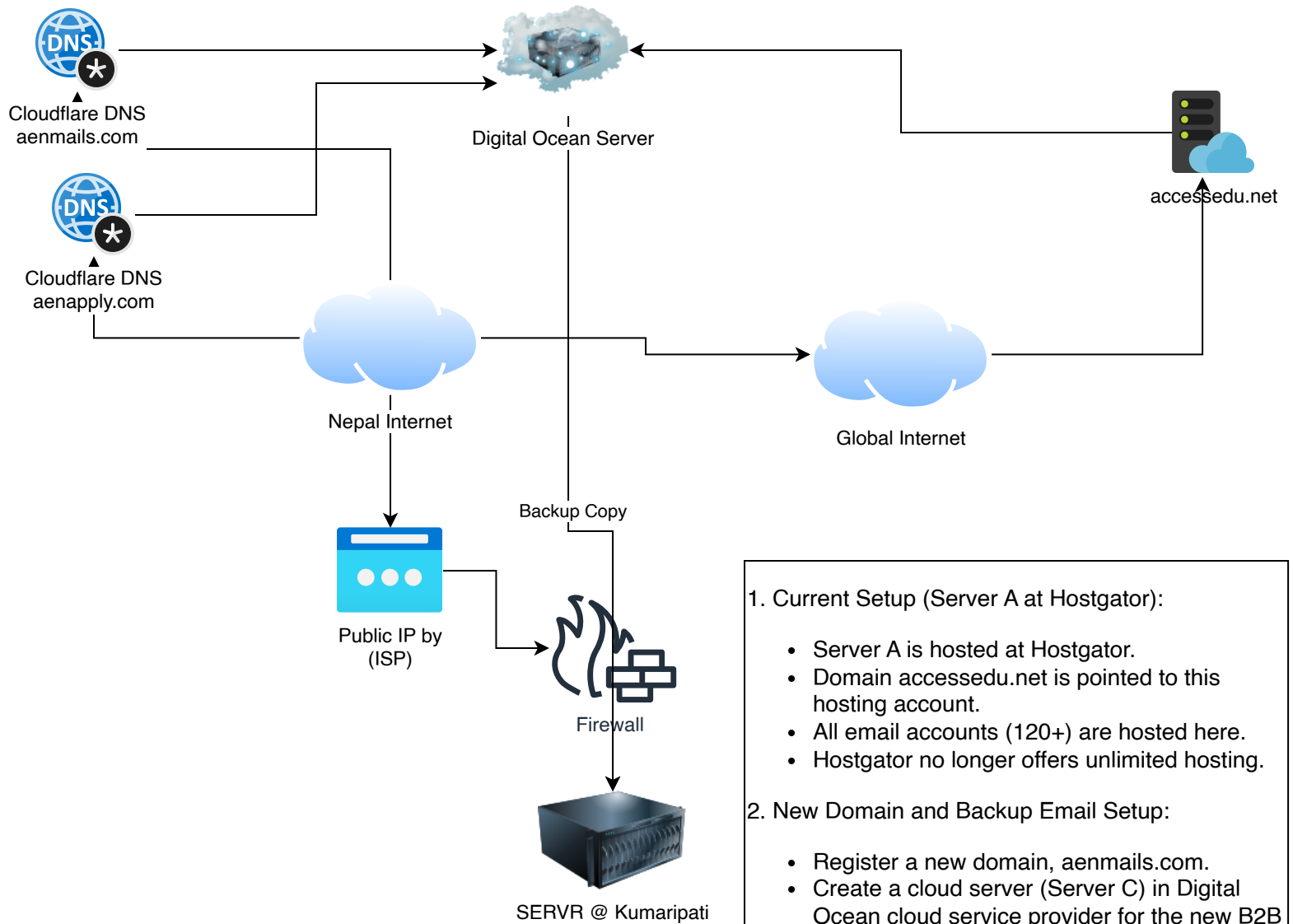
2. New Domain and Backup Email Setup:

- Register a new domain, `aenmails.com`.
- Create a cloud server (Server C) in Nepal-based cloud service provider for the new B2B application portal.
- Choose the cloud service provider based on proximity to Nepal for minimal latency.
- Configure email forwarding from `accessedu.net` to corresponding mirror accounts in `aenmails.com`.
- Take regular backups of `aenmails.com` Digital Ocean Droplets and store them on Server B at your office premise in Kumaripati Lalitpur.
- Set up the new B2B application portal on Server C with necessary configurations and security measures.

3. Backup Strategy:

- Implement backup procedures for both `aenmails.com` and the new B2B application portal on Server C.
- Regularly back up the application data, configurations, and email data.
- Store backup copies on Server B at your office premise for redundancy and disaster recovery.

MODEL - C Deployment (LITTLE BIT SLOWER FOR NEPAL BUT GOOD FOR ABROAD)



Costs of Operations (A)

1. aenapply.com Domain >> 2000
2. aenmails.com Domain >> 2000
3. accessedu.net Domain >> 2000
4. accessnepal.net Domain >> 2000
5. aenapply.com DO >> 36000
6. accessedu.net HG >> 96000

=====
Total : 1,40,000/-

This is total Annual Cost

1. Current Setup (Server A at Hostgator):

- Server A is hosted at Hostgator.
- Domain **accessedu.net** is pointed to this hosting account.
- All email accounts (120+) are hosted here.
- Hostgator no longer offers unlimited hosting.

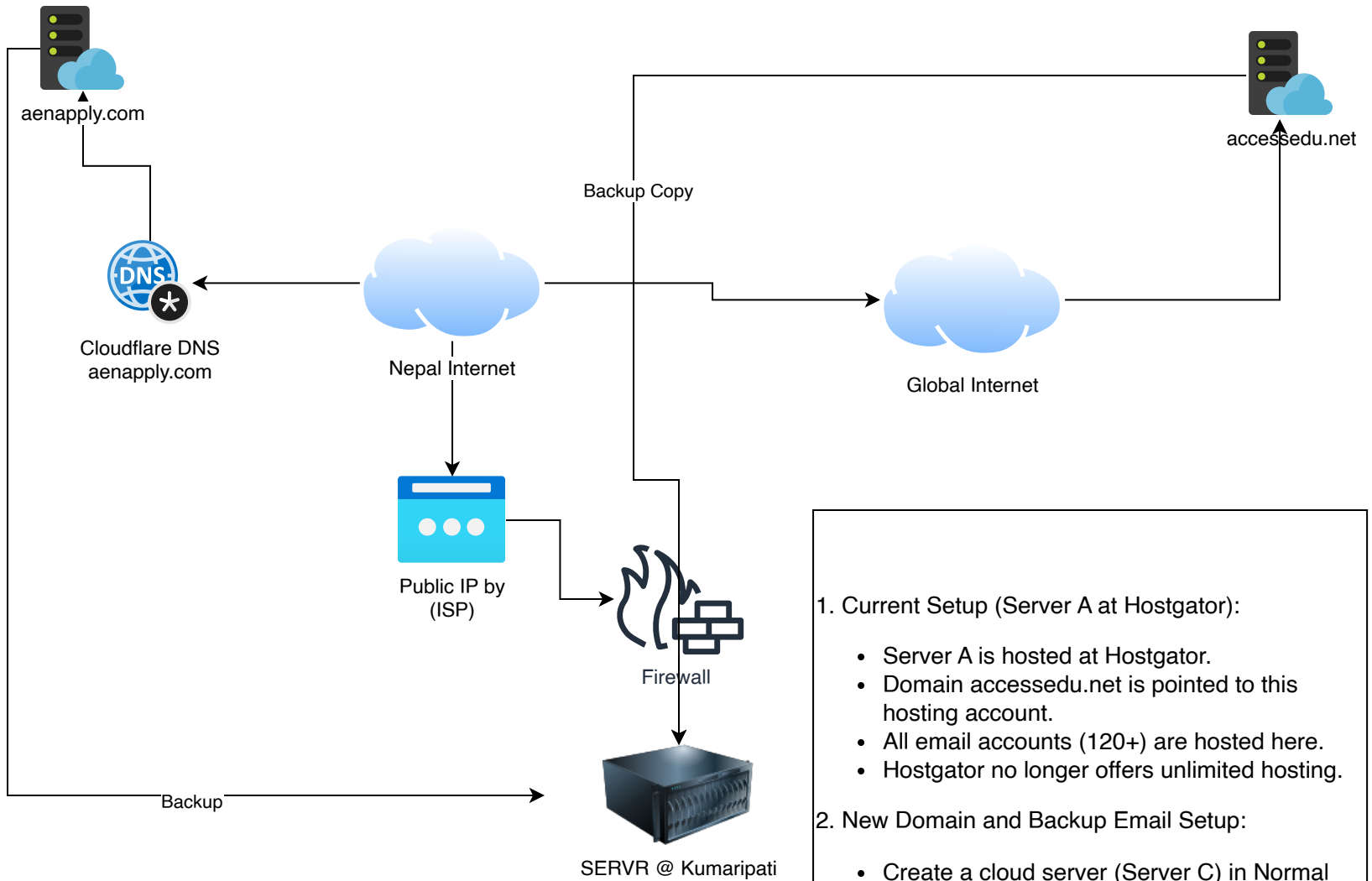
2. New Domain and Backup Email Setup:

- Register a new domain, **aenmails.com**.
- Create a cloud server (Server C) in Digital Ocean cloud service provider for the new B2B application portal.
- Configure email forwarding from **accessedu.net** to corresponding mirror accounts in **aenmails.com**.
- Take regular backups of **aenmails.com** Digital Ocean Droplets and store them on Server B at your office premise in Kumaripati Lalitpur.
- Set up the new B2B application portal on Server C with necessary configurations and security measures.

3. Backup Strategy:

- Implement backup procedures for both **aenmails.com** and the new B2B application portal on Server C.
- Regularly back up the application data, configurations, and email data.
- Store backup copies on Server B at your office premise for redundancy and disaster recovery.

MODEL - D Deployment (NORMAL)



Costs of Operations (D)

1. aenapply.com Domain >> 2000
2. accessedu.net Domain >> 2000
3. accessnepal.net Domain >> 2000
4. aenapply.com HG >> 48000
5. accessedu.net HG >> 48000

=====

Total : 1,04,000/-

This is total Annual Cost

1. Current Setup (Server A at Hostgator):

- Server A is hosted at Hostgator.
- Domain accessedu.net is pointed to this hosting account.
- All email accounts (120+) are hosted here.
- Hostgator no longer offers unlimited hosting.

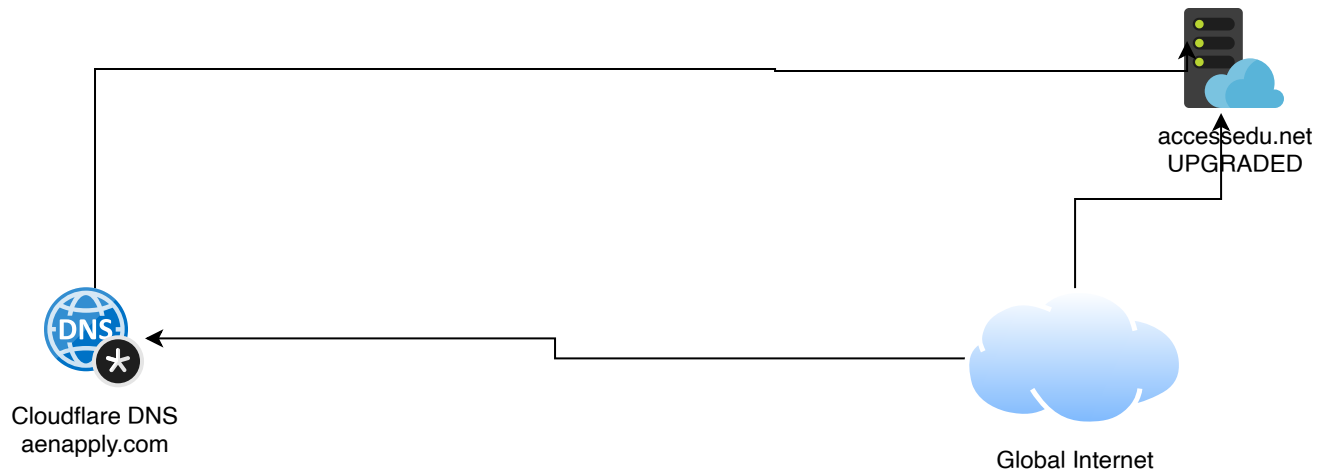
2. New Domain and Backup Email Setup:

- Create a cloud server (Server C) in Normal hosing provider for the new B2B application portal.
- Take regular backups of accessedu.net emails and store them on Server B at your office premise in Kumaripati Lalitpur.
- Set up the new B2B application portal on Server C with necessary configurations and security measures.

3. Backup Strategy:

- Implement backup procedures for both accessedu.net and the new B2B application portal on Server C.
- Regularly back up the application data, configurations, and email data.
- Store backup copies on Server B at your office premise for redundancy and disaster recovery.

MODEL - E Deployment (NORMAL - W/O Local Server)



Costs of Operations (E)

1. aenapply.com Domain >> 2000
2. accessedu.net Domain >> 2000
3. accessnepal.net Domain >> 2000
4. accessedu.net HG >> 482000

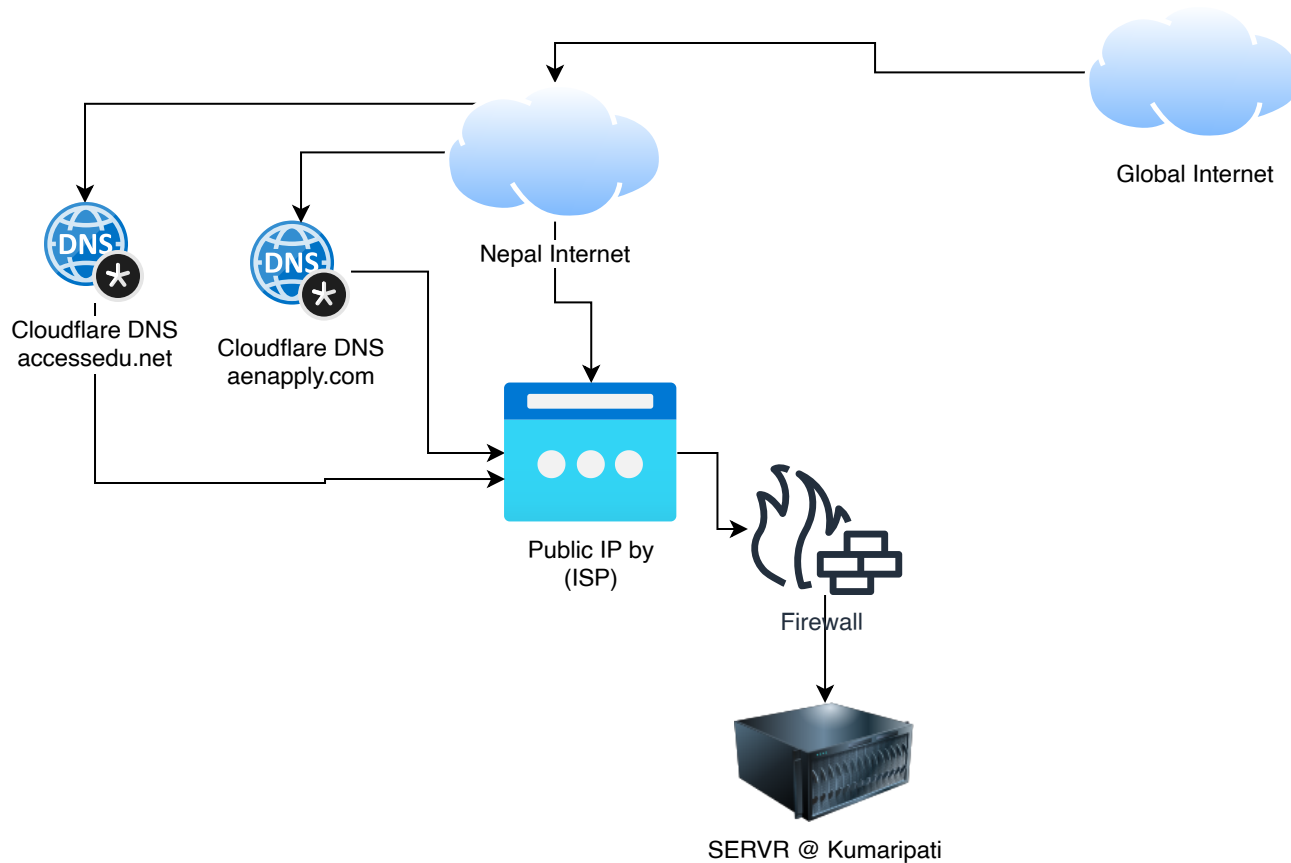
=====
Total : 4,88,000/-

This is total Annual Cost

1. Current Setup (Server A at Hostgator):

- Server A is hosted at Hostgator.
- Domain accessedu.net is pointed to this hosting account.
- All email accounts (120+) are hosted here.
- Hostgator no longer offers unlimited hosting.
- Upgrade HG to Dedicated Hosting with cPanel
- Set up the new B2B application portal on Server A with necessary configurations and security measures.

MODEL - E Deployment (NORMAL - ONLY Local Server)



Costs of Operations (E)

1. aenapply.com Domain >> 2000
2. accessedu.net Domain >> 2000
3. accessnepal.net Domain >> 2000
4. cPanel Account >> 96000

=====

Total : 1,02,000/-

This is total Annual Cost

1. Current Setup (Server Only at Kumaripati):

- Server A is hosted at Kumaripati.
- Domain accessedu.net is pointed to this hosting account.
- All email accounts (120+) are hosted here.
- Purchase cPanel for webmail access
- Set up the new B2B application portal on Server A with necessary configurations and security measures.